

Supplementary Information

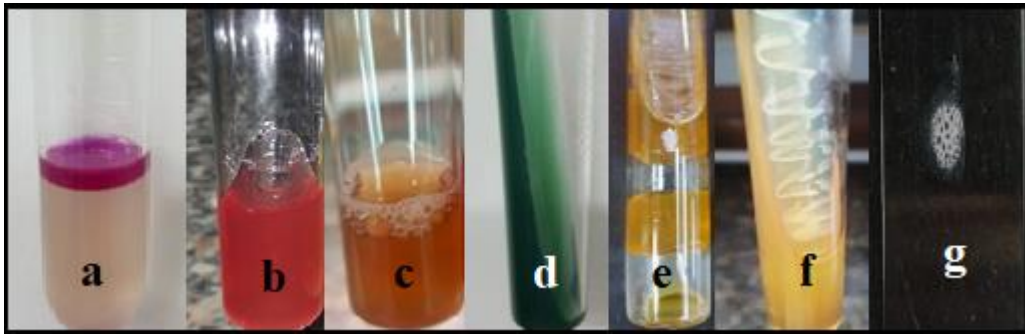


Figure S1: Representative results of biochemical tests used for identification of *E. coli* isolates. Positive results were demonstrated by: (a) Cherry-red color in the upper organic layer in indole production test; (b) Red color with a floating Durham tube in methyl red test; (c) Yellow slant and yellow butt with gas production in triple sugar iron test; and (d) Bubble formation in catalase test. Negative results were depicted by: (e) No observed pink coloration in urease test; (f) Yellowish color in Voges-Proskauer test; and (g) No change in the green color of Simmon's citrate media in the citrate utilization test.

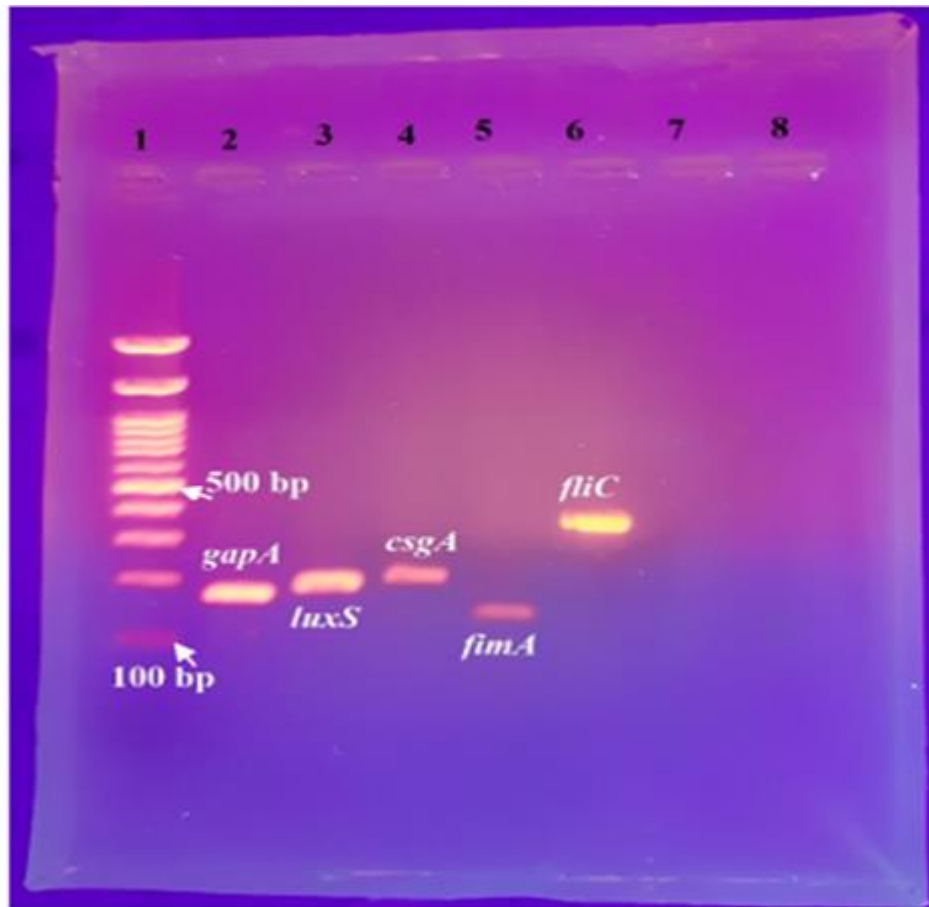


Figure S2: Representative agarose gel showing PCR amplification of the virulence, quorum sensing, and housekeeping genes in the tested *E. coli* isolates. Lane 1: 100 bp DNA molecular weight marker (GeneDireX RTU, Taiwan). Lanes 2-6 show amplicons of 176, 191, 200, 134, and 349 bp corresponding to *gapA*, *luxS*, *csgA*, *fimA*, and *fliC* genes, respectively.

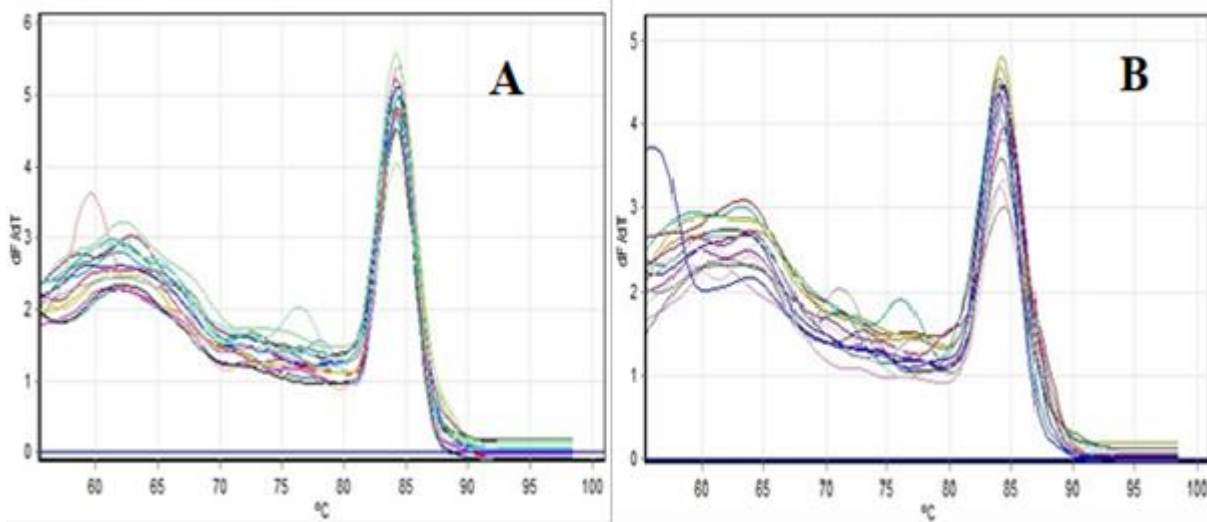


Figure S3: Representative melting curve analyses for the expression levels of (A); *gapA* (B); *luxS*.